

ACCESS TO EARLY CHILDHOOD SERVICES FOR CHILDREN AND FAMILIES PRENATAL THROUGH AGE 5

Family Involvement is critical throughout a Child's life. The Parents or Primary Caregivers are seen as the experts about their Child and Service Providers provide support to the Family.



FAMILY (lifespan)

Families have a primary decision making role in the care of their own children as well as the policies and procedures governing care for all children in their community

- Choosing culturally and linguistically competent support and service providers
- Setting goals
- Designing, implementing, and evaluating programs
- Monitoring outcomes
- Partnering in funding decisions

CHILD

- Demonstrates a need

PARENTS/CAREGIVERS

- Respond to a child's needs by providing care and seeking additional resources



SEEK ADDITIONAL SUPPORT

ADVOCACY MONITOR PROGRESS

DECISION MAKING

DEPARTMENT FOR COMMUNITY BASED SERVICES
DIVISION OF FAMILY SUPPORT Supplemental Nutrition Assistance Program, Kentucky Transitional Assistance Program, & Medicaid
<http://chfs.ky.gov/dCBS/dfs/>

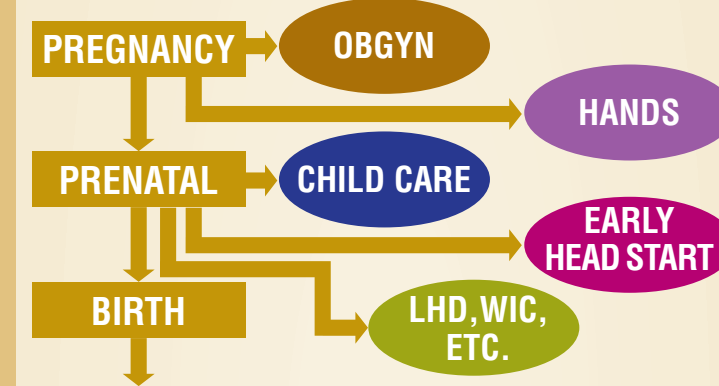
FAMILY RESOURCE YOUTH SERVICE CENTERS (FRYSC)
Located in public schools to promote healthy growth & development of children by assisting families to identify and address barriers to child's success in school. • <http://chfs.ky.gov/dfrvcs/frvsc>

COMMUNITY ACTION AGENCIES
Provide direct social services to families with low & moderate incomes • www.kaca.org/Home.aspx



MEDICAL, DENTAL, AND SOCIAL EMOTIONAL SERVICES

NOTE: If considering pregnancy abstain from alcohol, tobacco and other drugs from conception to birth, also take folic acid before pregnancy



PRIMARY CARE MEDICAL & DENTAL SERVICES

PREVENTIVE CARE
Available through Medicaid/KCHIP's EPSDT or Private Insurance (Immunizations & Well Child Exams including dental, vision, hearing screens)

LOCAL HEALTH DEPARTMENTS (LHD)
WIC, Nutrition, Breastfeeding, Well Child Exam & Dental Services

SPECIALITY CARE
Available through Medicaid/KCHIP's EPSDT or Private Insurance (Ear Nose & Throat Specialist, Audiologist, Ophthalmologist, Occupational, Physical, Speech Therapy, & other Medical Specialists etc.)

Commission for Children with Special Health Care Needs

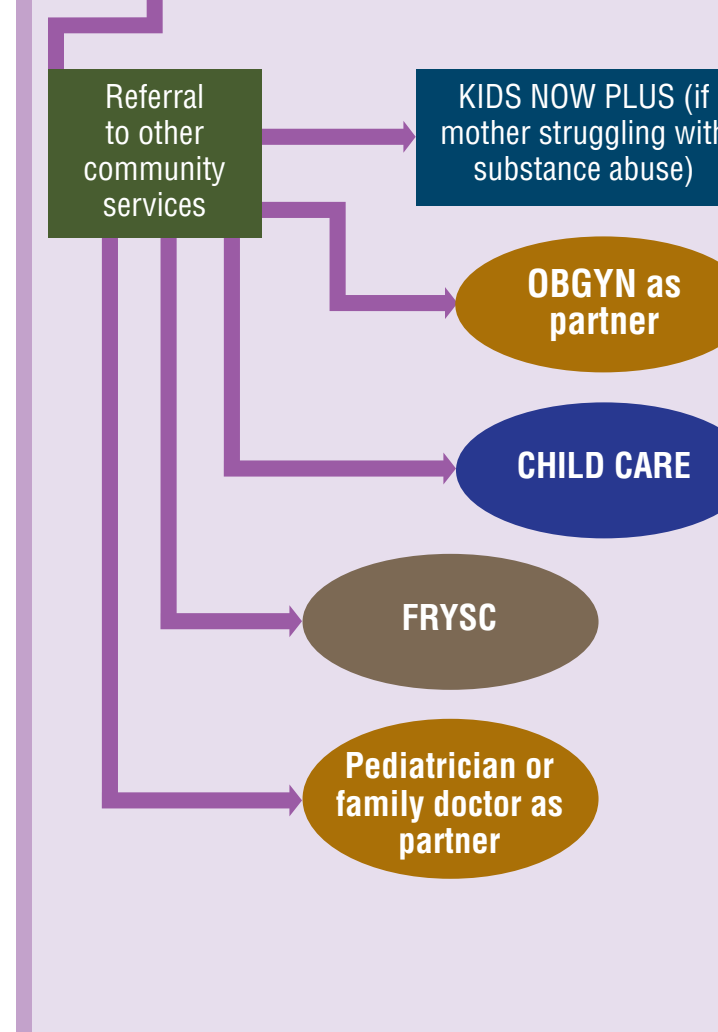
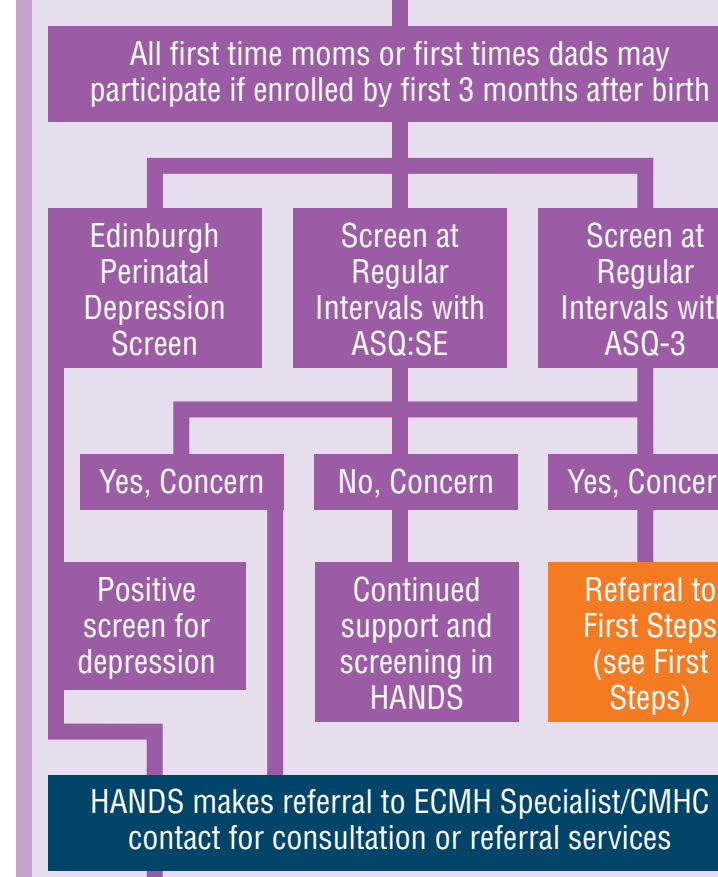
DENTAL SERVICES
Available through Medicaid/KCHIP's EPSDT or Private Insurance (Exams, X-Rays, Cleanings, fluoride, fillings, extractions, speciality care, etc.)

SOCIAL-EMOTIONAL OR BEHAVIORAL HEALTH PROVIDER
Available through Private Insurance or Medicaid/KCHIP's EPSDT from Community Mental Health Center DEPARTMENT FOR BEHAVIORAL HEALTH, DEVELOPMENTAL & INTELLECTUAL DISABILITIES
<http://mhmr.ky.gov>



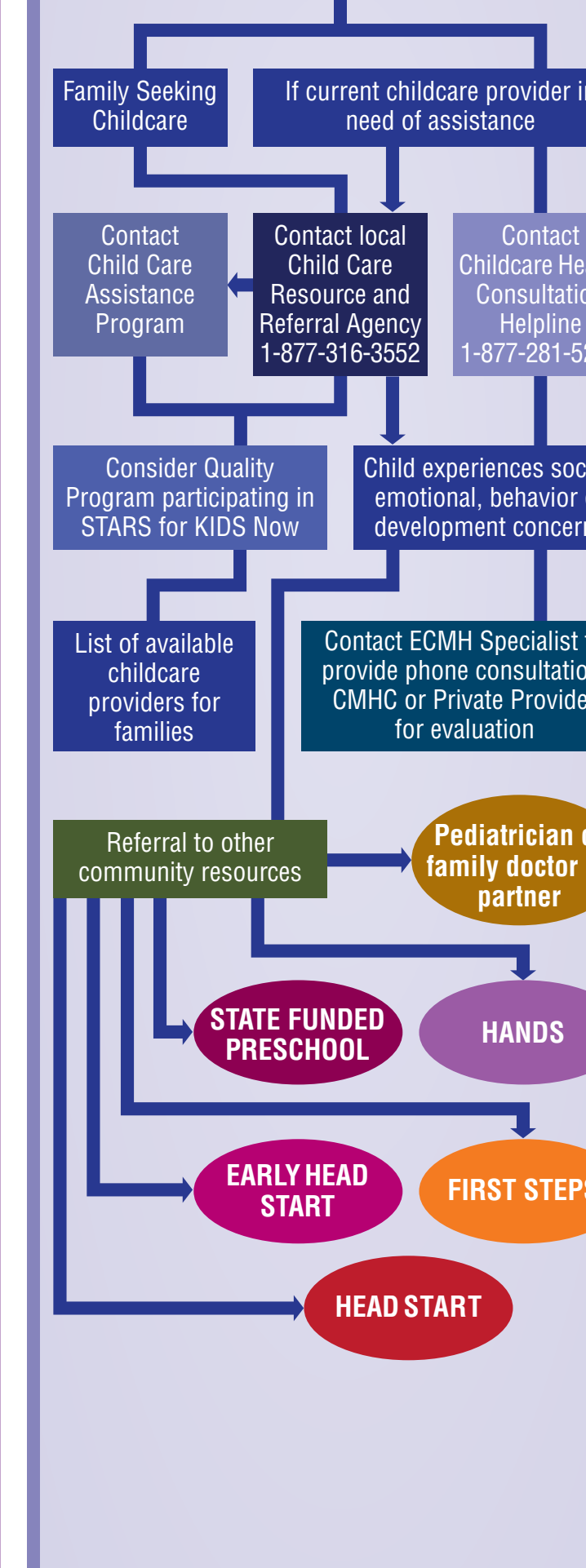
HANDS (age prenatal – 2)

HOME VISITING PROGRAM – through local health department for first time moms or first time dads beginning at conception to improve both health and social outcomes
www.chfs.ky.gov/dph/mch/ecd/hands.htm



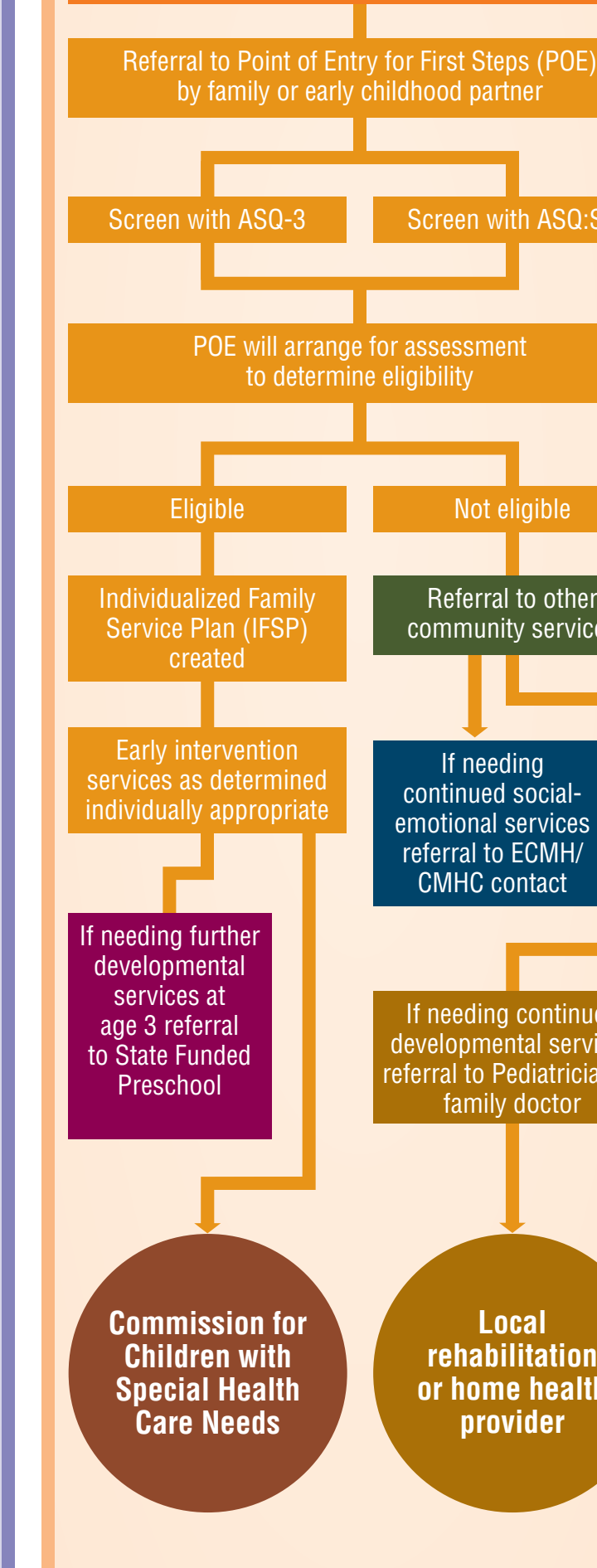
CHILDCARE (ages 6 weeks to 5+)

Any licensed childcare center, certified family home or private preschool provider
www.chfs.ky.gov/dCBS/dcc



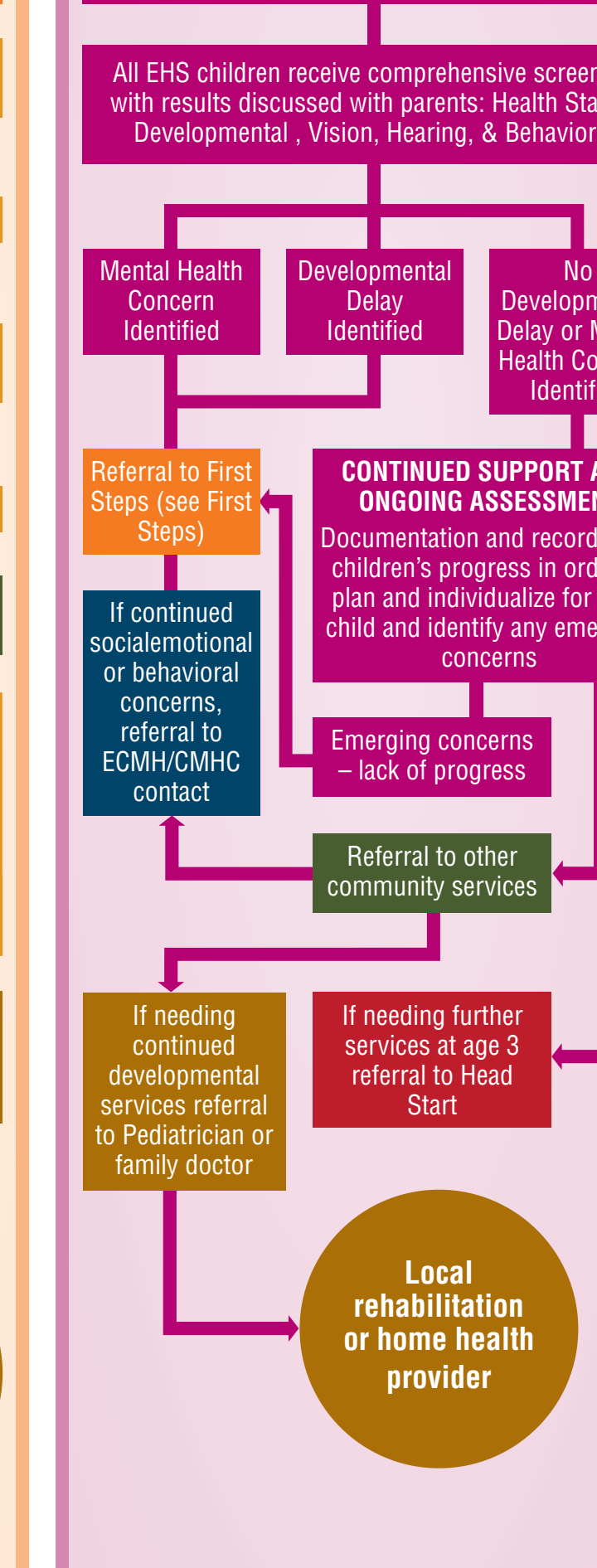
FIRST STEPS (ages 0 to 3)

Early intervention system for children with developmental delays or conditions known to cause developmental delays (primarily in home)
www.chfs.ky.gov/dph/firststeps/



EARLY HEAD START (ages 0 to 3)

A federally funded program for economically disadvantaged children (programs designed locally based on community needs; may be center based or home visiting program) • www.khsa.org

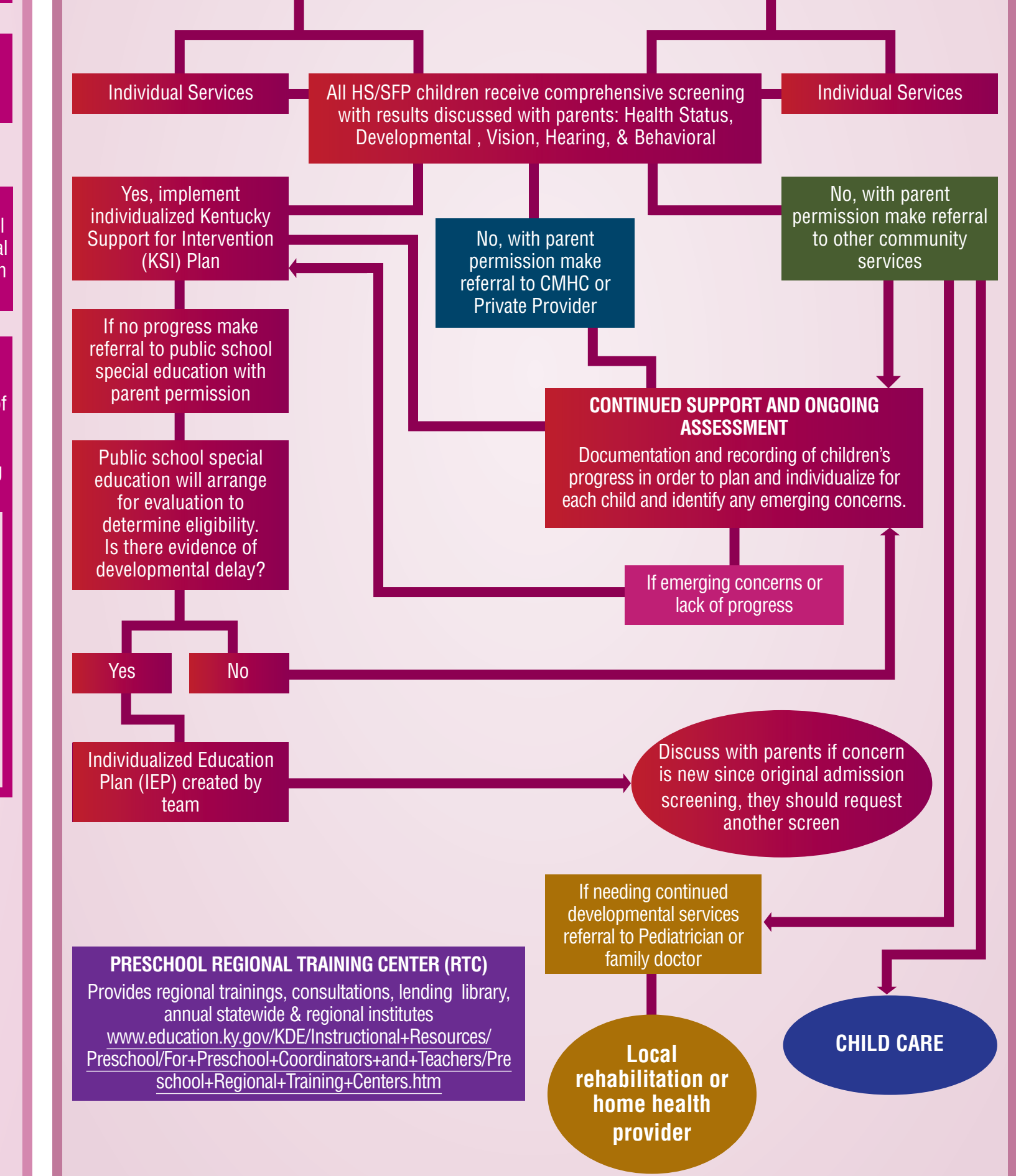


HEAD START (ages 3-4)

A federally funded program for economically disadvantaged children (programs designed locally based on community needs; program times may vary locally) • www.khsa.org

STATE FUNDED PRESCHOOL (ages 3-4)

Preschool is for 3 and 4 year olds with disabilities, as well as income eligible 4 year olds (typically center based 1/2 day program) • www.education.ky.gov/KDE/Instructional+Resources/Preschool/



ACCESS TO EARLY CHILDHOOD SERVICES FOR CHILDREN AND FAMILIES PRENATAL THROUGH AGE 5

PURPOSE: to help service providers and families refer young children to appropriate programs and community services that are designed to support families with children from the prenatal stage through age five.

VISION: to improve the integration of medical, educational, social-emotional and developmental services for families while establishing the need for family involvement and family driven care.

GOAL: to improve the promotion, prevention, transition and treatment of children and families.

FAMILY

Family Support Resources

For more information on Family resources, please see link to KPFC <http://www.kypartnership.org/>

MEDICAL, DENTAL, & SOCIAL-EMOTIONAL SERVICES

Medicaid

1-800-635-2570 • <http://chfs.ky.gov/dms/default.htm>

Passport Health Plan

1-800-578-0603 • <http://www.passporthealthplan.com/>

KCHIP: Kentucky Children's Health Insurance Program is for children under the age of 19 who do not have health insurance and whose family income is below 200 percent of the federal poverty level
<http://www.kidshealth.ky.gov/en/kchip/>

EPSDT: Early Periodic Screening, Diagnosis, and Treatment – provides preventative health care for children and teens; specialty health care for medically necessary services.
<http://chfs.ky.gov/dms/services.htm>

LHD: Local Health Departments – provide WIC, nutrition, breastfeeding, and other women's health services. LHD also provide pediatric health services including child physicals, immunizations, fluoride varnish, lead screening and case management, and infectious disease services.
<http://chfs.ky.gov/dph/Local+Health+Department.htm>

WIC: (Women, Infants, and Children) Nutritional Support Program – Administered by LHD; provides a monthly food package, nutrition education, and access to maternal, prenatal and pediatric health care services to low-income pregnant, breastfeeding and postpartum women, infants and children up to age 5.
<http://chfs.ky.gov/dph/mch/ns/wic.htm>

Commission for Children with Special Health Care Needs – provides care for children with physical disabilities.
1-800-232-1160 • <http://chfs.ky.gov/ccshcn/>

Four points of early childhood dental health:

- First dental visit by age one.
- Robust and dependable oral hygiene by the parent to the child
- Periodic application of fluoride varnishes
- Routine dental care in the early years because even primary teeth are important

CHILDCARE

CCAP: Child Care Assistance Program – provides subsidy program for low income families
<http://chfs.ky.gov/dcbs/dcc/ccap.html>

CCR&R: Child Care Resource and Referral Agencies – provides parent referrals and consultation and training of child care providers
<http://www.kentuckypartnership.org/General/About/ccrr.aspx>

CECC: Community Early Childhood Council – improve the quality and availability of child care
<http://www.education.ky.gov/KDE/Instructional+Resources/Early+Childhood+Development/Community+Early+Childhood+Councils.htm>

STARS for KIDS Now – Kentucky's voluntary quality rating improvement system,
1-800-421-1903 • <http://chfs.ky.gov/dcbs/dcc/stars>

CCHC: Child Care Health Consultation – Technical assistance of childcare providers for health, safety, nutrition
1-877-281-5277 • www.kentuckycchc.org

ECMH: Early Childhood Mental Health Program – consist of regional ECMH Specialists who provide consultation and training to child care providers regarding social, emotional and behavioral issues. Also provide evaluation, assessment, and therapeutic services for children from birth through the age of 5 and their families • <http://mhmr.ky.gov/mhsas/Early%20Childhood%20MH.asp?sub1>

Kentucky Partnership for Early Childhood Services
<http://www.kentuckypartnership.org/Home.aspx>

DEPARTMENT FOR BEHAVIORAL HEALTH, DEVELOPMENTAL & INTELLECTUAL DISABILITIES

CMHC: Community Mental Health Centers or Comprehensive Care Centers
<http://chfs.ky.gov/dms/Community+Mental+Health+Centers.htm>

ECMH Services: Through ECMH Program – CMHC have providers trained to work with children 5 years of age and younger and their families. (See CMHC website)

KY IMPACT – program which utilizes service coordination to wrap services around children with severe emotional disabilities
<http://mhmr.ky.gov/mhsas/KY%20Impact.asp>

RIAC: Regional Interagency Councils – are a part of KY IMPACT and provide regional guidance to services for children struggling with social-emotional issues and their families

Impact Plus – program for children at risk for entry into foster care or institutionalization
<http://mhmr.ky.gov/mhsas/IMPACT%20Plus.asp>

KIDS Now Plus – case management services for pregnant women at risk for SA, MH, and DV problems
(800) 374-9146 • <http://cdar.uky.edu/KIDSNOW/Welcome.html>

STATE RESOURCES FOR AUTISM

Kentucky Autism Training Center:
<https://louisville.edu/education/kyautismtraining>

This was made possible by:

- Early Childhood Comprehensive Systems Grant (ECCS grant through DPH, MCH Division)
- Kentucky Partnership for Families and Children, Inc. (KPFC)
- Kentucky's System to enhance Early Childhood Development (KY SEED)

Developed in Conjunction with:

- Kentucky Partnership for Families and Children, Inc., Early Childhood Family Support Network Committee
- Department of Public Health, Division of Maternal and Child Health
- KY Head Start Collaboration Office
- Department for Community Based Services, Division of Child Care
- Department for Behavioral Health, Developmental & Intellectual Disabilities
- Kentucky Department of Education, Office of Next Generation Learners

For more information or questions contact:

Kentucky Partnership for Families and Children, Inc.
207 Holmes Street, First Floor
Frankfort, KY 40601
502-875-1320 • 1-800-369-0533
www.kypartnership.org

LOCAL CONTACTS

 Please write in local contact information where applicable

Local Health Department Number: <http://chfs.ky.gov/dph>

HANDS Coordinator (in LHD):

First Steps Point of Entry: KY 1-800-442-0087

DCBS Family Support Office: <http://chfs.ky.gov/dcbs/dfs>

Community Action Agency: 1-800-456-3452

KY Head Start Collaboration Office: 502-564-8341

Head Start or Early Head Start Coordinator: www.khsa.org

Local School District: <http://www.education.ky.gov/KDE/About+Schools+and+Districts/Kentuckys+Schools+and+Districts/>

State Funded Preschool Local Coordinator:

Child Care Resource & Referral Agency: 1-877-316-3552

Child Care Health Consultation: 1-877-281-5277

Community Mental Health Center: 888-705-0463

Early Childhood Mental Health Specialist: <http://mhmr.ky.gov/mhsas/Early%20Childhood%20MH.asp?sub1>

Home Health Providers:

Local Rehabilitation Provider:

Prevent Child Abuse Kentucky: 859-225-8879 (www.pcaky.org)

Abuse Hotline: 800-752-6200

Poison Control: 800-222-1222

Injury Prevention/SAFE KIDS Coalition: <http://www.kiprc.uky.edu/projects/paipp/safekidsjune2011.pdf>

KY Dept. for Libraries & Archives: <http://kdla.ky.gov/librarians/Pages/LibraryDirectory.aspx>

Early Hearing Detection & Intervention: 877-757-4327

Visually Impaired Preschool Services (VIPS): 1-888-636-8477

Commission for Special Health Care Needs (CCSHCN): 1-800-232-1160

Other: